

中心之服務範圍廣泛, 同時齊備多項專科設施, 包括:

- 植牙 - 全口修復
- 顫頷關節(牙骹)疾病
- 口腔癌評估
- 牙齒矯正 - 隱式美, 金屬牙箍, 透明牙箍
- 根管治療
- 牙套, 牙橋及瓷貼面
- 牙齒美容 - 改善微笑, 四環素污漬
- 補牙
- 牙周病治療 - 洗牙, 牙腳深層治療
- 激光療程

Our multi-specialty Centre offers a wide range of services, including:

- Implant - Full Mouth Rehabilitation
- Temporomandibular Joint Dysfunction
- Oral Cancer Screening
- Orthodontics - Invisalign, Metal brackets, Clear brackets
- Root Canal Treatment
- Crown, Bridge and Veneers
- Cosmetic Dentistry - Smile Improvement, Tetracycline Stains
- Dental Fillings
- Periodontal treatment and Surgery - Scaling & Prophylaxis, Root Planning
- Laser Dentistry

牙科中心  
DENTAL CENTRE

*"Your smile is our concern."*



## 路線圖 Directions



請由**A座正門**★前往本中心, 並請使用銅鑼灣道之落客處。

Please enter via **Block A main entrance**★. For drop offs, please use Tung Lo Wan Road.



更多資訊

For More Information

📍 : 香港銅鑼灣東院道二號 (聖保祿醫院 A座二樓)  
2 Eastern Hospital Road, Causeway Bay  
(2/F, Block A, St. Paul's Hospital)

☎ : 2830 3710 / 2830 3718



聖保祿醫院  
St. Paul's Hospital

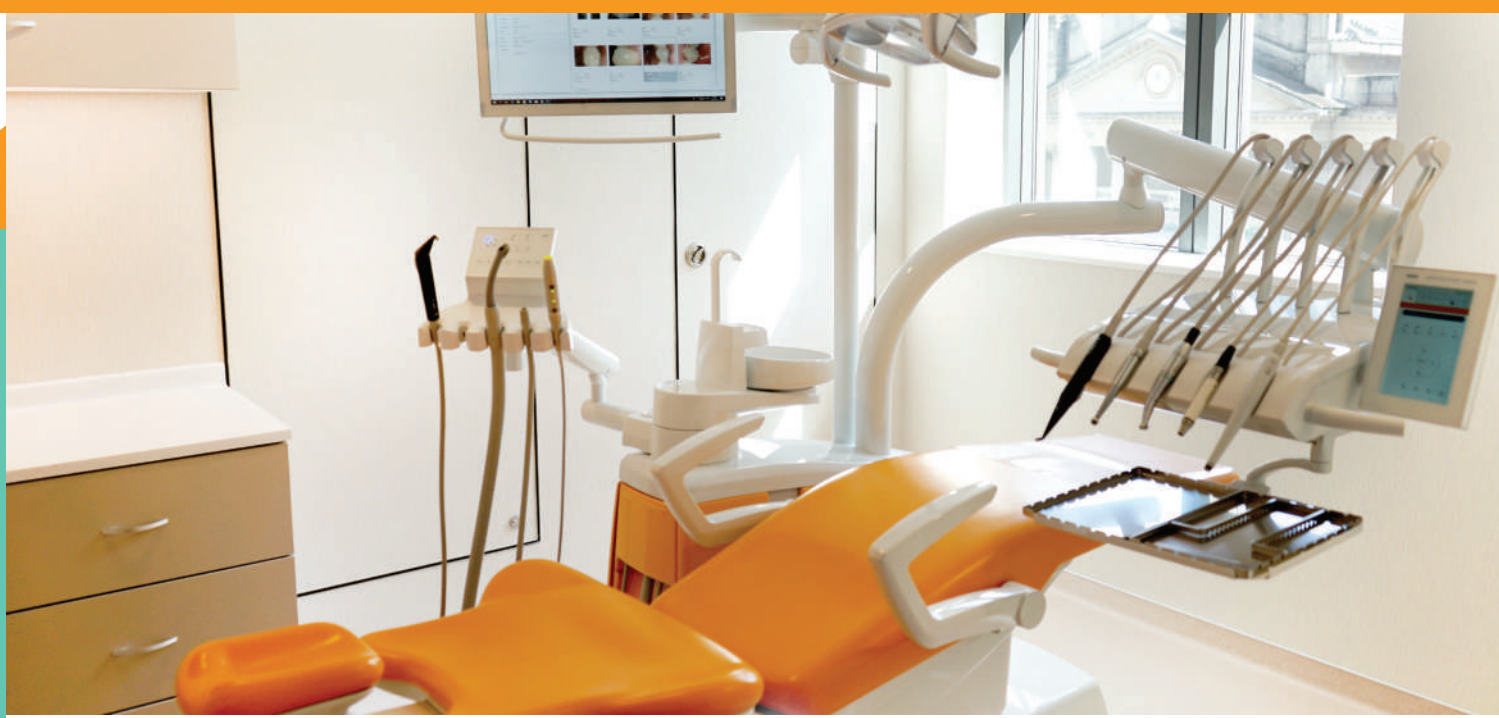


牙科中心  
DENTAL CENTRE

**“Your smile is our concern.”**

本中心環境舒適優美，設有尖端的設施和儀器，並採用由澳洲醫療服務標準委員會認可的交叉感染控制的標準下進行牙科檢查及治療。

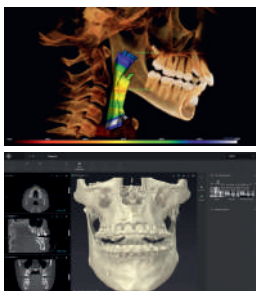
Our comfortable Centre is equipped with state-of-the-art dental equipment and materials, backed by a strict standard of cross infection control that is accredited by The Australian Council on Healthcare standard (ACHS).



屢獲殊榮的牙科錐狀射束電腦斷層掃描技術  
Award-Winning CONE BEAM 3D Dental Imaging



於造影質素和輻射劑量間達致最理想平衡  
Optimal balance between image quality and dose



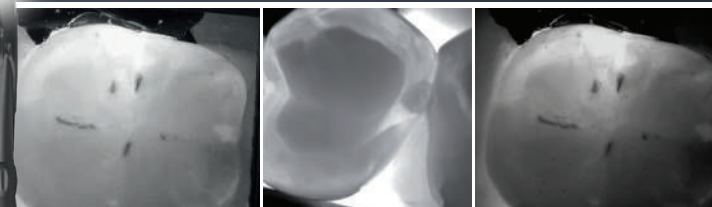
## Light Walker

(鉅雅各)牙科激光  
ER:YAG dental laser

專科激光  
Exceptional Laser Power

精確  
Precision

安全  
Safe



## DIAGNOcam

可媲美X光質素的無輻射齲齒探測儀  
X-ray quality without radiation

關於齲齒的全新觀點  
A whole new perspective on caries

操作簡單而舒適  
Simple operation and pure comfort